

# **MAJOR CONTRACTS IN THE WORLD**

**JANUARY 1995 to MARCH 2011**

# MAJOR CONTRACTS LIST

COUNTRY	END USER	PROJECT	DESCRIPTION	SETS	DELIVERY
<b>AFRICA</b>					
<b>ALGERIA</b>	KAHRAMA SPA	<b>DESALINATION PLANT</b> (ARZEW DESALINATION AND POWER COMPLEX PROJECT, 90,000m <sup>3</sup> /d)	ONE COMPLETE LOT OF PUMPING SET such as 6 nos. of BRINE RECIRCULATION PUMP, 4 nos. of SEAWATER FEED PUMP	34	2004
	HAMMA WATER DESALINATION SPA	<b>RO DESALINATION PLANT</b> (HAMMA DESALINATION PLANT 44MIGD)	9 nos. of HIGH PRESSURE SEAWATER FEED PUMP	25	2006
	SHARIKET KAHRABA HADJRET SPA	<b>POWER PLANT</b> (CENTRAL CYCLE COMBINE HADJRET EN NOUSS, 1200MW)	6 nos. of HP B.F. P.	25	2007
	TAHLYAT MYAH MAGTAA SPA	<b>DESALINATION PLANT</b> (MAGTAA DESALINATION PLANT)	10 nos. of RO FEED PUMP	10	2010
	GENERAL ELECTRIC COMPANY OF LYBIA	<b>DESALINATION PLANT</b> (MAGTAA DESALINATION PLANT)	RO FEED PUMP		2010
<b>EGYPT</b>	MINISTRY OF STATE FOR NEW ARBAN COMMUNITIES AUTHORITY	<b>WATER WORKS</b> (EL OBOUR PUMPING STATION)	4 nos. of $\phi$ 800 VERTICAL DOUBLE SUCTION PUMP	17	1999
	NATIONAL RENEWABLE AUTHORITY	<b>POWER PLANT</b> (ISCC KURAYMAT PROJECT)	2 nos. of B.F.P. and 2 nos. of $\phi$ 1200 CWP	4	2009
	CONSTRUCTION AUTHORITY OF POTABLE WATER AND WASTEWATER	<b>WATER WORKS</b> (NEW CAIRO TREATMENT PLANT)	12 nos. of $\phi$ 1000 BOOSTER PUMP	12	2010
	EAST DELTA ELECTRICITY	<b>POWER PLANT</b> (AIN SOKHNA PROJECT)	2 nos. of B.C. P.	18	2012
<b>LIBYA</b>	MUNICIPALITY OF ZILITEN	<b>DESALINATION PLANT</b> (10,000T/D)	4 nos. of $\phi$ 600 VERTICAL MIXD-FLOW SEAWATER SUPPLY PUMP	16	1990
	GENERAL ELECTRIC COMPANY OF LYBIA	<b>DESALINATION PLANT</b> (ABU TARABA)	4 nos. of $\phi$ 800 SEAWATER PUMP	9	2005
	GENERAL ELECTRIC COMPANY OF LYBIA	<b>DESALINATION PLANT</b> (ZAIWA, DERNA, SOUSSA)	11 nos. of $\phi$ 900 SEAWATER PUMP	21	2008
	GENERAL PROJECT COMMITTEE TRIPOLI CITY	<b>SEWERAGE</b> (EL HADBA EL KHADRA S.T.W.)	6nos. of $\phi$ 500 VERTICAL MIXED-FLOW EFFLUENT PUMP	6	2008
	GENERAL ELECTRIC COMPANY OF LYBIA	<b>POWER PLANT</b> (NE KHALIJ PROJECT)	8 nos. of B.C.P.	8	2010
<b>AMERICA, SOUTH &amp; NORTH</b>					
<b>CANADA</b>	TRANS CANADA ENERGY LTD.	<b>POWER PLANT</b> (HALTON HILLS GENERATING STATION)	4 nos. of B.F.P.	4	2008
<b>U.S.A.</b>	WINSCONSIN ENERGY CORPORATION	<b>POWER PLANT</b> (ELM ROAD GENERATING STATION, UNIT 1.2)	2 nos. of B.C.P.	2	2006
	FORMOSA PLASTIC CORPORATION, U.S.A.	<b>CHEMICAL PLANT</b>	4 nos. of B.F.P.	4	2008
	CITY OF DETROIT, WATER AND SEWERAGE DEPT.	<b>SEWERAGE</b> (WICK ROAD PUMP STATION REHABILITATION)	2 nos. of $\phi$ 600 LINE PUMP	3	2009
<b>ARGENTINE</b>		<b>POWER PLANT</b> (AES PARANA IPP)	4 nos. of HP FEEDWATER PUMP	8	2011-12
	FIDEI COMISO CENTRAL TERMO ELECTRICA TIMBUES	<b>POWER PLANT</b> (SAN MARTIN CCPP)	3 nos. of CONDENSATE EXTRACTION PUMP	9	2000
<b>EL SALVADOR</b>	AES EL SALVADOR	<b>POWER PLANT</b> FONSECA COAL FIRED POWER PROJECT, 250MW (UNIT 1)	5 nos. of $\phi$ 1650 CIRCULATING WATER PUMP	5	2008
<b>BRAZIL</b>		<b>POWER PLANT</b> (FORTALEZA THERMOELECTRIC POWER PLANT, CCCP, 310MW)	3 nos. of B.F.P.	3	2010
<b>CHILE</b>		<b>POWER PLANT</b> (ENDESA CHILE CENTRAL SAN ISIDRO- II)	2 nos. of $\phi$ 1000 MAIN CIRCULATION WATER PUMF	28	2006
	EMPRESA ELECTRICA GUACOLDA S.A.	<b>POWER PLANT</b> (GUACOLDA POWER PLANT UNIT 4)	ONE COMPLETE LOT OF PUMPING SET such as 2 nos. of $\phi$ 1000 MAIN CIRCULATING WATER PUMP	47	2008
	AES GENER S.A.	<b>POWER PLANT</b> (ANGAMOS COAL FIRED POWER PROJECT, 250MW AND CANPICHE COAL FIRED POWER PROJECT, 250MW)	9 nos. of B.C.P. and 6 nos. of S.C.A.H. DRAIN TRANSFER PUMP	15	2009
<b>COSTA RICA</b>	POWER ENGINEEERS, INC.	<b>POWER PLANT</b> (MIKIRAVALLS III, GEOTHERMAL POWER PLANT PROJECT, 25MW)	2 nos. of $\phi$ 750 HOT WELL PUMP	4	1999
<b>MEXICO</b>		<b>POWER PLANT</b> (TUXPAN CCPP)	12 nos. of B.F.P.	37	2000-01
		<b>POWER PLANT</b> (ALTAMIRA II, CCPP)	4 nos. of B.F.P.	12	2001
		<b>POWER PLANT</b> (TUXPAN V, CCPP)	4 nos. of HP/IP B.F.P.	24	2005
	COMISION FEDERAL DE ELECTRICIDAD	<b>POWER PLANT</b> (PACIFICO COAL FIRED POWER PLANT, 700MW)	ONE COMPLETE LOT OF PUMPING SET such as 1 nos. of BARREL CASING B.F.P. and 3 nos. of $\phi$ 2100 CIRCULATING WATER PUMP	17	2008

# MAJOR CONTRACTS LIST

COUNTRY	END USER	PROJECT	DESCRIPTION	SETS	DELIVERY
<b>ASIA</b>					
<b>CHINA</b>	SHANXI ELECTRIC POWER CO.	<b>POEWR PLANT</b> (SHANXI HEIJIN POWER PLANT, COAL FIRED UNIT, 350MW)	2 nos. of B.F.P. DRIVEN BY 6400kW MOTOR, 6 nos. of B.C.P.	26	1998
	NORTHERN CHINA ELECTRIC POWER ADMINISTRATION	<b>POWER PLANT</b> (HEIBEI-SANHE POWER PLANT, 350MW x 2UNITS)	4 nos. of $\phi$ 1500 CIRCULATING WATER PUMP	38	1998
	BAO STEEL GROUP	<b>STEEL PLANT</b>	3 nos. of 300 DOUBLE SUCTION WATER SUPPLY PUMP	42	2006
	BAO STEEL GROUP	<b>STEEL PLANT</b> (SHANGHAI PUDONG STEEL)	VARIOUS WATER SUPPLY PUMPS	25	2007
	SHANGHAI LNG CO., LTD.	<b>LNG VAPORAZING PLANT</b> (SHANGHAI LNG TERMINAL & TRUNKLINE PROJECT)	5 nos. of $\phi$ 800 SEAWATER VAPORIZER PUMP	5	2008
	EAST ASIA POWER (XIAMEN) CO., LTD.	<b>POWER PLANT</b> (XIAMEN CCGT POWER PLANT, 350MW x 2)	4 nos. of B.F.P. and 4 nos. of $\phi$ 1200 C.W.P.	8	2008
	SHANGHAI LNG CO., LTD.	<b>LNG PLANT</b> (SHANGHAI LNG TERMINAL & TRUNKLINE PROJECT)	5 nos. of $\phi$ 800 SEAWATER VAPORIZER PUMP	7	2008
	SHANGHAI SHIDONGKOU POWER GENERATION LTD.	<b>POWER PLANT</b> (HUANENG SHIDONGKOU POWER PLANT 660MW x 2)	2 nos. of BCP	2	2009
	PETRO CHINA JIANGSU LNG CO., LTD.	<b>LNG PLANT</b> (JIANGSU LNG RECEIVING THERMAL PROJECT)	4 nos. of $\phi$ 900 SEAWATER PUMP	4	2010
	PETRO CHINA DALIAN LNG CO., LTD.	<b>LNG PLANT</b> (DALIAN LNG)	4 nos. of $\phi$ 900 SEAWATER PUMP	4	2010
<b>HONG KONG</b>	DRAINAGE SERVICES DEPT.	<b>SEWAGE TREATMENT PLANT</b> (HARBOUR AREA TREATMENT SCHEME (HATS))	8 nos. of $\phi$ 1100(2500kW) and 3 nos. of $\phi$ 1000 (770kW) VERTICAL MIXED-FLOW VOLUTE PUMP	27	1997
	WATER SUPPLIES DEPT.	<b>WATER WORKS</b> (9 PUMPING STATION INCLUDING TSUEN WAN FRESH WATER PUMPING STATION)	4 nos. of $\phi$ 300 DOUBLE SUCTION FRESH WATER PUMP	20	2002
	WATER SUPPLIES DEPT.	<b>WATER WORKS</b> (WATER TRANSMISSION TO SEVEN PUMPING STATIONS INCLUDING CHEUNG SHA WAN SALT WATER PUMPING STATION)	4 nos. of 350 VERTICAL DOUBLE SUCTION PUMP	16	2009
	DONGGUAN CITY GOVERNMENT CONSTRUCTION & ENGINEERING MANAGEMENT BUREAU	<b>POWER PLANT</b> (SHA JIAO INTAKE PUMPING STATION AND TAI GANG XU BOOSTER PUMPING STATION)	10 nos. of $\phi$ 1800 RAW WATER SUPPLY PUMP	10	2009
<b>INDIA</b>	NATIONAL THERMAL POWER CORPORATION	<b>POWER PLANT</b> (FARRAKKA-1 PROJECT, KORBA P/S 500MW, and DADRI-2 490MW STAGE-2 UNIT-5&6 EACH 3 NOS.)	12 nos. of B.F.P.	12	2009
	THE TATA POWER CO., LTD.	<b>POWER PLANT</b> 4000MW ULTRA MEGA POWER PROJECT	8 nos. of B.C.P.	8	2009-10
	BAHARAT HEAVY ELECTRICALS LTD.	<b>POWER PLANT</b> NTPC SIMHADRI-3&4 PROJECT AND OTHERS	18 nos. of B.C.P.	18	2009
	BAHARAT HEAVY ELECTRICALS LTD.	<b>POWER PLANT</b> (ARVALLI TPP)	13 nos. of B.C.P.	13	2010
	BAHARAT HEAVY ELECTRICALS LTD.	<b>POWER PLANT</b> (TAMILNADU ELECTRICITY BOARD NORTH CHENNAI TPC 600MW x 2)	6 nos. of B.C.P.	6	2010
	BAHARAT HEAVY ELECTRICALS LTD.	<b>POWER PLANT</b> (MAITHON POWER LIMITED MAITHON RBTPP 525MW x 2)	6 nos. of B.C.P.	6	2010
	WARDHA POWER COMPANY PRIVATE LIMITED	<b>POWER PLANT</b> (KSK THERMAL POWER PLANT 660MW x 6)	18 nos. of B.C.P.	18	2010
	NTPC LTD.	<b>POWER PLANT</b> (SASAN ULTRA MEGA POWER PLANT 660MW x 6)	2 nos. of B.C.P.	2	2010
	ADANI POWER LTD.	<b>POWER PLANT</b> (TIRODA THERMAL POWER PLANT 660MW x 3)	3 nos. of B.C.P.	3	2010
	KRISHNAPATNAM POWER STATION	<b>POWER PLANT</b> (KRISHNAPATNAM, STAGE I 800MW x 2 -UNIT No.1&2)	2 nos. of B.C.P.	2	2010
	THE NTPC TAMIL NADU ENERGY COMPANY LTD.	<b>POWER PLANT</b> (VALLUR PROJECT)	10 nos. of B.C.P.	10	2010-12
	RELIANCE INFRASTRUCTURE	<b>POWER PLANT</b> (SAMALKOT)	12 nos. of B.F.P. and 6 nos. of CONDENSATE EXTRACTION PUMP	18	2011
	JINDAL INDIA THERMAL POWER LTD.	<b>POWER PLANT</b> (JITPL DERANG PROJECT 600MW x 2)	6 nos. of B.C.P.	6	2011
	MAHARASHTRA STATE POWER	<b>POWER PLANT</b> (CHANDRAPUR PROJECT)	6 nos. of B.C.P.	6	2011
	BARA THERMAL POWER PLANT	<b>POWER PLANT</b> (BARA THERMAL POWER PROJECT 660MW x 3)	3 nos. of B.C.P.	3	2011-12

# MAJOR CONTRACTS LIST

COUNTRY	END USER	PROJECT	DESCRIPTION	SETS	DELIVERY
INDIA	NABHA POWER LTD.	<b>POWER PLANT</b> (RAJPURA THERMAL POWER PROJECT 700MW x 2)	2 nos. of B.C.P.	2	2012
	GMR CHHATTISGARH ENERGY PVT. LTD.	<b>POWER PLANT</b> (RAIPUR PROJECT)	2 nos. of B.C.P.	2	2012
	NPTC LTD.	<b>POWER PLANT</b> (BARTH SUPER THERMAL POWER PROJECT 660MW x 3)	7 nos. of B.C.P.	7	2012-13
INDONESIA	CONSOLIDATED ELECTRIC POWER ASIA LIMITED	<b>POWER PLANT</b> (TANJUN JUTI "B")	4 nos. of DOUBLE SUCTION COOLING WATER PUMP	12	2004
	PT PLN	<b>POWER PLANT</b> (CILEGON CCGP)	2 nos. of $\phi$ 500 DOUBLE SUCTION SEAWATER BOOSTER PUMP	34	2005
	PT PLN	<b>POWER PLANT</b> (MUARA KARANG)	ONE COMPLETE LOT OF PUMPING SET such as 3 nos. of BARREL CASING B.F.P.	38	2008
	CIREBON ELECTRIC POWER	<b>POWER PLANT</b> (CIREBON COAL FIRED POWER PLANT)	2 nos. of TURBINE DRIVER B.F.P.	5	2009
	PT PAITON ENERGY COMPANY	<b>POWER PLANT</b> (PAITON EXTENSION PROJECT)	3 nos. of $\phi$ 1950 CIRCULATING WATER PUMP	26	2010
KOREA	KEPCO	<b>POWER PLANT</b> (PUSAN CCGP 1800MW 4UNITS)	16 nos. of B.C.P.	16	2002
MALAYSIA	TNB	<b>POWER PLANT</b> (PASIR GUDANG CONVERSION PROJECT 85MW)	2 nos. of $\phi$ 1000 VERTICAL DOUBLE SUCTION CIRCULATING WATER PUMP	14	1995
	PRAI POWER SDN BHD	<b>POWER PLANT</b> (PRAI CCGT P/S)	3 nos. of $\phi$ 1200 CIRCULATING WATER PUMP	16	2002
	RANHILL ENGINEERS AND CONSTRUCTORS SDN BHD	<b>WATER WORKS</b> (SEMANGAR WATER SUPPLY SCHEME PHASE 1)	4 nos. of $\phi$ 600 TREATED WATER PUMPS	4	2003
		<b>POWER PLANT</b> (JIMAH POWER PLANT)	3 nos. of $\phi$ 1400 FGD ABSORBER PUMP	6	2005
	SAJ HOLDINGS SDN BHD	<b>WATER WORKS</b> (BEKOK WATER TRANSFER SCHEME)	8 nos. of $\phi$ 450 RAW WATER PUMPS	8	2007
	PORT DICSON REHABILITATION PROJECT	<b>POWER PLANT</b> (PHASE-II)	4 nos. of HP/IP B.F.P.	6	2007
PAKISTAN	KESC, PAKISTAN	<b>POWER PLANT</b> (BIN QASIM THERMAL POWER STATION, UNIT 6)	ONE COMPLETE LOT OF PUMPING SET such as 3 nos. of B.F.P.	14	1995
PHILLIPPINE	NATIONAL POWER CORPORATION	<b>POWER PLANT</b> (MINDANAO COAL-FIRED POWER PLANT, 210MW)	4 nos. of B.F.P.	12	2005
		<b>POWER PLANT</b> (GLOBAL FORMOSA POWER GENERATION CORP., TOLEDO, ILO ILO AND PANY)	10 nos. of B.F.P. and 15 nos. of $\phi$ 1000 CWP	25	2009
SINGAPORE	TUAS POWER LIMITED	<b>POWER PLANT</b> (TUAS I BLOCK 3&4)	4 nos. of B.F.P.	18	2004
	PUBLIC UTILITIES BOARD	<b>SEWAGE PLANT</b> (CHANGI WATER RECLAMATION PLANT CONTACT EP6)	8 nos. of VERTICAL MIXED-FLOW EFFLUENT PUMP	8	2007
	PUBLIC UTILITIES BOARD	<b>WATER WORKS</b> (MARINA RAW WATER PUMPING STATION)	4 nos. of $\phi$ 900 RAW WATER PUMP	4	2008
	BABCOCK-HITACHI K.K.	<b>POWER PLANT</b> (SENOKO POWER STATION STAGE II REPOWERING)	6 nos. of HP/IP FEED WATER PUMP	10	2010
	PUBLIC UTILITIES BOARD	<b>WATER WORKS</b> (MODIFICATION TO CHESTNUT AVENUE WATERWORKS)	6 nos. of $\phi$ 600 LOW LIFT PUMP	6	2010
SRI LANKA	NEM bv	<b>POWER PLANT</b> (KERAWALAPITIYA CCGP, 300MW)	4 nos. of B.F.P.	4	2008
TAIWAN	TAIWAN TPC/DAH-TARN POWER STATION OF POWER COMPANY	<b>POWER PLANT</b> (TPC/DAH-TARN POWER PLANT STAGE1,2)	ONE COMPLETE LOT OF PUMPING SET such as 8 nos. of B.F.P.	62	2007
THAILAND	E.G.A.T.	<b>D.H.C. PLANT</b> (ALPHA CHILLER PROJECT)	5 nos. of $\phi$ 500 CHILLED WATER SECONDARY PUMP	40	1996
	TLP COGENERATION COMPANY LIMITED	<b>POWER PLANT</b> (TLP COGENERATION POWER PLANT)	3 nos. of $\phi$ 800 COOLING WATER PUMP	31	2002
	SUBARNABHUMI	<b>D.H.C. PLANT</b> (INTERNATIONAL AIR PORT)	8 nos. of $\phi$ 300 COOLING WATER PUMP	40	2004
	BLC POWER LIMITED	<b>POWER PLANT</b> (MAP TA PHUT POWER PROJECT)	6 nos. of B.C.P.	39	2005
	PTT CHEMICAL PUBLIC COMPANY LIMITED	<b>DESALINATION PLANT</b> (RAYONG DESALINATION PLANT, RO)	ONE COMPLETE LOT OF PUMPING SET such as 10 nos. of SEAWATER HIGH PRESSURE PUMP	42	2006
	RATCHABURI POWER COMPANY LIMITED	<b>POWER PLANT</b> (LNG FIRED CCGT, 1400MW)	ONE COMPLETE LOT OF PUMPING SET such as 6 nos. of HP/IP B.F.P.	38	2006
	E.G.A.T.	<b>POWER PLANT</b> (SOUTH BANGKOK CCGP BLOCKIII)	ONE COMPLETE LOT OF PUMPING SET such as 3 nos. of HP/IP B.F.P.	27	2007
	E.G.A.T.	<b>POWER PLANT</b> (NORTH BANGKOK CCGP)	4 nos. of HP B.F.P., 2 nos. of $\phi$ 1400 CIRCULATING WATER PUMP, and etc	17	2009
	METROPOLITAN WATERWORKS AUTHORITY	<b>WATER WORKS</b> (SAM LAE RAW WATER PUMPING STATION No. 2)	2 nos. of $\phi$ 1500 RAW WATER PUMP	2	2011

# MAJOR CONTRACTS LIST

COUNTRY	END USER	PROJECT	DESCRIPTION	SETS	DELIVERY
VIETNAM	ELECTRICITY OF VIETNAM	<b>POWER PLANT</b> (PHU MY 1 THERMAL POWER PROJECT, 900MW)	ONE COMPLETE LOT OF PUMPING SET such as 4 nos. of B.F.P.(2750kW), 2 nos. of φ2000 CIRCULATING WATER PUMP	58	1999
	ELECTRICITY OF VIETNAM	<b>POWER PLANT</b> (JONG BI EXTENTION PROJECT, 300MW)	2 nos. of φ1500 CIRCULATING WATER PUMP WITH ADJUSTABLE BLADE	2	2005
	ELECTRICITY OF VIETNAM	<b>POWER PLANT</b> (OMON THERMAL POWER PLANT PROJECT)	ONE COMPLETE LOT OF PUMPING SET such as 3 nos. of BARREL CASING B.F.P.	41	2007
	VIETNAM OIL AND GAS CORPORATION	<b>POWER PLANT</b> (CAMAU1-750MW CCPP, CAMAU2-750MW CCPP)	4 nos. of φ 1500 MAIN CIRCULATION WATER PUMP	8	2007
	VIETNAM OIL AND GAS CORPORATION	<b>POWER PLANT</b> (NHON TRACH 2 - 750MW)	2 nos. of φ1950 COOLING WATER PUMP	2	2010

## EUROPE

IRELAND		<b>POWER PLANT</b> (HUNTSTOWN POWER STATION, HUNTSTOWN PHASE II CCGT)	ONE COMPLETE LOT OF PUMPING SET such as 2 nos. of HP/IP B.F.P.	18	2006
U.K.	E.ON	<b>POWER PLANT</b> (ISLE OF GRAIN POWER STATION)	6 nos. of HP/IP B.F.P. and 6 nos. of CONDENSATE PUMP	12	2008
	RWE NPOWER	<b>POWER PLANT</b> (STAY THORPE C)	8 nos. of HP/IP B.F.P.	8	2008
FRANCE	CYCOFOS POWER PLANT	<b>POWER PLANT</b> (PL 1 CCPP)	4 nos. of B.F.P.	4	2007
GREECE	HERON THERMOELECTRIC S.A.	<b>POWER PLANT</b> (THIVA COMBINED CYCLE POWER PLANT)	2 nos. of HP/IP B.F.P.	4	2009
NETHERLANDS	NUON MAGNUM IGCC POWER PROJECT	<b>POWER PLANT</b> (EEMSHAVEN GRONINGEN 430MW x 3 GTCC)	ONE COMPLETE LOT OF PUMPING SET such as 6 nos. of HP B.F.P. and of IP B.F.P.	51	2010-11
RUSSIA	OGK-4	<b>POWER PLANT</b> (SHATURA CCPP, 400MW)	2 nos. of B.F.P.and 2 nos. of CONDENSATE PUMP	4	2008
	OGK-5	<b>POWER PLANT</b> (SUGRES OGK-5 PROJECT)	2 nos. of HP B.F.P.	8	2009
TURKEY	TURKEY ELECTRIC URETIM ILETIM ANONIUM SIRKETI	<b>POWER PLANT</b> (TEK KANGAL UNIT NO.3, 150MW)	3 nos. of B.F.P., 2 nos. of φ 1100 CIRCULATING WATER PUMP	20	1997
	TURKISH ELECTRICITY GENERATION TRANSMISSION CORP.	<b>POWER PLANT</b> (ELBISTAN-B THERMAL POWER PLANT 360MW x 4UNITS)	ONE COMPLETE LOT OF PUMPING SET such as 4 nos. of B.F.P.(1260kW), 8 nos. of φ 1200 CIRCULATING WATER PUMP	122	2001
	EREN ENERJI ELECTRIC URETIM A.S.	<b>POWER PLANT</b> (ZETES POWER PLANT)	7 nos. of φ 1350 MAIN COOLING WATER PUMP	13	2009
	RWE & TURCAS GUNEY ELEKTRIK	<b>POWER PLANT</b> (CCPP DENIZLI 800MW)	2 nos. of CLOSED CIRCUIT COOLING WATER PUMP	4	2011

## MIDDLE EAST

BAHRAIN	TUBLI WATER POLLUTION CONTROL CENTRE	<b>WATER WORKS</b> (9 PUMPING STATION INCLUDING ABU SAYBI PUMPING STATION)	51 nos. of WATER PUMPS	51	2004
	MINISTRY OF ELECTRICITY & WATER	<b>DESALINATION PLANT</b> (RAJ RO PLANT, EXPANSION PROJECT)	2 nos. of HIGH PRESSURE PUMP	9	2005
IRAN	TAVANIR	<b>POWER PLANT</b> (TAVANIR GHARB THERMAL POWER PLANT, 250MW x 4UNITS)	ONE COMPLETE LOT OF PUMPING SET such as 2 nos. of BOILER (490T/H)FEED PUMP.	72	1990
	IRAN POWER PLANT MANAGEMENT CO.	<b>POWER PLANT</b> (8 COMBINED CYCLE POEWR PLANTS)	88 nos. of RING SECTION B.F.P.	88	2007
	IRAN POWER PLANT PROJECTS MANAGEMENT CO.	<b>POWER PLANT</b> (22 UNITS COMBINED CYCLE POWER PLANT, SHRIVAN)	8 nos. of B.F.P.and 4 nos. of C.P.	12	2010
	IRAN POWER COMPANY	<b>POWER PLANT</b> (MAPNA PROJECT)	16 nos. of B.F.P.	16	2010
	MAPNA BOILER ENGINEERING & MANUFACTURING CO. IRAN POWER COMPANY	<b>POWER PLANT</b> (ABADAN 2 1ST AND 2ND UNITS) <b>POWER PLANT</b> (HRSGs PROJECT)	8 nos. of B.F.P. 16 nos. of B.F.P.	8 16	2010 2010-11
JORDAN	SAMRA ELECTRIC GENERATING CO.	<b>POWER PLANT</b> (SAMRA CCPP, 300MW)	6 nos. of BARREL CASING B.F.P.	14	2005
	NATIONAL ELECTRIC POWER COMPANY OF THE HASHEMITE	<b>POWER PLANT</b> (ANMAN EAST POWER PROJECT)	4 nos. of B.F.P.	25	2007
	DISI WATER COMPANY	<b>WATER TRANSMISSION</b> (DISI-MUDAWARRA TO AMMAN WATER CONVEYANCE SYSTEM)	15 nos. of WATER TRANSMISSION PUMP	15	2011
KUWAIT	MINISTRY OF ENERGY	<b>POWER PLANT</b> (SABIYA POWER STATION, 300MW x 8UNITS)	ONE COMPLETE LOT OF PUMPING SET such as 8 nos. of φ600 DOUBLE SUCTION CIRCULATING WATER PUMP	129	1995
	MINISTRY OF ENERGY	<b>DESALINATION PLANT</b> (AZ ZOUR SOUTH STAGE II , 24MIGD)	ONE COMPLETE LOT OF PUMPING SET such as 4 nos. of φ1350 BRINE RECIRCULATION PUMP	28	1996
	MINISTRY OF ELECTRICITY AND WATER	<b>DESALINATION PLANT</b> (AZ ZOUR SOUTH DISTILLATION PLANT STAGE III, 24MIGD)	ONE COMPLETE LOT OF PUMPING SET such as 5 nos. of φ1200 BRINE RECIRCULATION PUMP	30	2000
	MINISTRY OF ENERGY	<b>DESALINATION PLANT</b> (SABIYA DISTILLATION PLANT, PHASE I , 12.5MIGD x 4UNITS)	ONE COMPLETE LOT OF PUMPING SET such as 8 nos. of φ1000 BRINE RECIRCULATION PUMP	43	2005
	MINISTRY OF ENERGY	<b>DESALINATION PLANT</b> (SABIYA DISTILLATION PLANT, PHASE III, 12.5MIGD x 4UNITS)	ONE COMPLETE LOT OF PUMPING SET such as 8 nos. of φ1000 BRINE RECIRCULATION PUMP	28	2006

# MAJOR CONTRACTS LIST

COUNTRY	END USER	PROJECT	DESCRIPTION	SETS	DELIVERY	
KUWAIT	SHUAIBA SOUTH POWER & WATER DISTILLATION STATION	<b>DESALINATION PLANT</b> (SHUAIBA SOUTH WATER DISTILLATION STATION)	2 nos. of $\phi$ 1200 BRINE RECIRCULATION PUMP	28	2006	
	PETROCHEMICAL INDUSTRIES COMPANY	<b>PETROCHEMICAL PLANT</b> (EQUATE OLEFINS 2, COOLING TOWER)	7 nos. of $\phi$ 1200 SEAWATER PUMP	12	2007	
	PUBLIC AUTHORITY FOR INDUSTRY	<b>COOLING WATER PLANT</b> (SHUAIBA INDUSTRIAL COMPLEX)	13 nos. of $\phi$ 1400 VERTICAL MIXED-FLOW COOLING WATER PUMP	14	2007	
	KUWAIT MEW SHUWAIKH	<b>RO DESALINATION PLANT</b> (SHUWAIKH RO PROJECT)	ONE COMPLETE LOT OF PUMPING SET such as 12 nos. of $\phi$ 200 1ST PASS HIGH PRESSURE PUMP	56	2009	
OMAN	MINISTRY OF ELECTRICITY & WATER	<b>DESALINATION PLANT</b> (GHUBRAH III POWER AND DESALINATION PLANT, 12.5MIGD x 2UNITS)	ONE COMPLETE LOT OF PUMPING SET such as $\phi$ 1200 VERTICAL MIXED-FLOW SEAWATER SUPPLY PUMP	40	1991	
	SOHAR INTERNATIONAL UREA & CHEMICAL INDUSTRIES	<b>UREA PLANT</b>	4 nos. of $\phi$ 1200 VERTICAL MIXED-FLOW SEAWATER PUMP	4	2006	
	SOHAR REFINERY COMPANY LLC.	<b>REFINERY PLANT</b>	4 nos. of $\phi$ 1150 VERTICAL MIXED-FLOW SEAWATER PUMP	13	2006	
	SNN BARKA POWER COMPANY S.A.O.C.	<b>POWER PLANT</b> (BARKA PHASE II POWER AND DESALINATION PROJECT)	ONE COMPLETE LOT OF PUMPING SET such as 4 nos. of B.F.P.	42	2008	
		<b>DESALINATION PLANT</b> (SALALAH DESALINATION PROJECT)	6 nos. of RO HP PUMP	10	2010	
QATAR	QATAR GENERAL ELECTRICITY & WATER CORPORATION	<b>WATER WORKS</b> (RAS LAFFAN WATER PIPELINE BOOSTER PUMP STATION)	6 nos. of $\phi$ 400 VERTICAL DOUBLE SUCTION PUMP	11	2004	
	QATAR ELECTRICITY & WATER COMPANY	<b>DESALINATION PLANT</b> (RAS LAFFAN B INDEPENDENT WATER AND POWER PLANT, 15MIGD x 4UNITS)	ONE COMPLETE LOT OF PUMPING SET such as 8 nos. of $\phi$ 1200 VERTICAL MIXED-FLOW BRINE RECIRCULATION PUMP	53	2007	
	QATAR ELECTRICITY & WATER COMPANY	<b>DESALINATION PLANT</b> (RAS ABU FONTAS SEAWATER DESALINATION PLANT)	ONE COMPLETE LOT OF PUMPING SET such as 4 nos. of $\phi$ 1200 VERTICAL DOUBLE SUCTION BRINE RECIRCULATION PUMP	25	2007	
	QATAR ELECTRICITY & WATER COMPANY	<b>WATER WORKS</b> (GTC-78 GHARAFFA AND WEST BAY PUMPING STATIONS)	22 nos. of $\phi$ 400 POTABLE WATER PUMP	22	2007	
	QATAR TECHNICAL SUPPORT	<b>SEWERAGE PLANT</b> (LUSAIL PLSD 1 SEWAGE PUMPING STATION)	5 nos. of $\phi$ 350 SEWAGE PUMP	5	2007	
	PUBLIC WORKS AUTHORITY	<b>IRRIGATION</b> (TES-1 AND TES-2 PUMPING STATIONS)	8 nos. of $\phi$ 500 IRRIGATION PUMP	8	2007	
	IBERDROLA INGENIER Y CONSR TRUCCION, S.A.U.	<b>POWER PLANT</b> (MESAIEED A IWPP PROJECT, 2000MW)	12 nos. of HP B.F.P., 12 nos. of IP B.F.P., 9 nos. of $\phi$ 1500 CIRCULATING WATER PUMP, 6 nos. of CONDENSATE WATER PUMP	44	2008	
	QATAR ELECTRICITY & WATER COMPANY	<b>DESALINATION PLANT</b> (RAS ABU FONTAS A EXTENTION)	6 nos. of $\phi$ 1200 VERTICAL DOUBLE SUCTION BRINE RECIRCULATION PUMP	18	2008	
	QATAR PETROLEUM AND HYDRO ALUMINUM AS.	<b>SEAWATER INTAKE</b> (QATALUM SERVICE AREA & POT ROOM BUILDING)	3 nos. of SEAWATER INTAKE PUMP	3	2008	
	PUBLIC WORKS AUTHORITY	<b>IRRIGATION</b> (TES-3 PUMPING STATION)	6 nos. of $\phi$ 700 TREATED SEWAGE EFFLUENT PUMP	6	2011	
	ENTREPOSE CONTRACTING	<b>SEWERAGE PLANT</b> (PUBLIC WORKS AUTHORITY DOHA NORTH SEWERAGE TREATMENT & ASSOCIATED WORKS)	16 nos. of $\phi$ 700 x 600 LIFTING PUMP	16	2010	
	SAUDI ARABIA	SALINE WATER CONVERSION CORPORATION	<b>DESALINATION PLANT</b> (AL-SHOAIBA PHASE II , 100MIGD)	ONE COMPLETE LOT OF PUMPING SET such as 20 nos. of $\phi$ 1500 BRINE RECIRCULATION PUMP	101	1996
		RABIGH ARABIAN WATER AND ELECTRICITY COMPANY	<b>POWER PLANT</b> (RABIGH DISTRICT, 600MW)	ONE COMPLETE LOT OF PUMPING SET such as 3 nos. of HHP B.F.P. AND 4 nos. of HP B.F.P.	50	2006
RABIGH ARABIAN WATER AND ELECTRICITY COMPANY		<b>DESALINATION PLANT</b> (RABIGH DISTRICT, 8000T/H)	32 nos. of RO FEED PUMP	56	2006	
SHUAIBA WATER AND ELECTRICITY COMPANY		<b>DESALINATION PLANT</b> (SHUAIBA IWPP PJT, 194MIGD)	24 nos. of $\phi$ 1200 BRINE RECIRCULATION PUMP, and $\phi$ 2200 SEAWATER SUPPLY PUMP	82	2007	
SHUAIBA WATER AND ELECTRICITY COMPANY		<b>DESALINATION PLANT</b> (SHUAIBA III EXPANSION RO PROJECT, 33MIGD)	11 nos. of 1ST PASS HIGH PRESSURE PUMP	43	2008	
SAUDI KAYAN PETROCHEMICAL COMPANY		<b>PETROCHEMICAL PLANT</b> (SAUDI KAYAN CHEMICAL COMPLEX)	4 nos. of VHP B.F.P. and 5 nos. of HP B.F.P.	9	2008	
SHUQAIQ WATER AND ELECTRICITY COMPANY		<b>RO DESALINATION &amp; POWER PLANT</b> (SHUQAIQ IWPP PHASE II )	ONE COMPLETE LOT OF PUMPING SET such as 6 nos. of BARREL CASING B.F.P.	105	2009	
MINISTRY OF WATER AND ELECTRICITY WATER GENERAL		<b>WATER WORKS</b> (BAZAKHA AND SALAF PUMP STATION)	MAIN PUMP	8	2010	
SALINE WATER CONVERSION CORPORATION		<b>DESALINATION PLANT</b> (S.W.C.C. JEDDAH PHASE III RO PROJECT)	6 nos. of $\phi$ 800 FILTERED WATER PUMP	34	2010-11	
MARAFIQ (POWER AND WATER UTILITY COMPANY)		<b>POWER PLANT</b> (JUBAIL & YANBU)	1 nos. of $\phi$ SEAWATER PUMP	1	2011	
SAUDI ELECTRICITY COMPANY		<b>POWER &amp; DESALINATION PLANT</b> (QURAYYAH CCPP PROJECT)	45 nos. of B.F.P.	94	2011	
RABIGH ELECTRICITY COMPANY		<b>POWER PLANT</b> (RABIGH IPP PROJECT)	4 nos. of $\phi$ 1500 ABSORBER PUMP	4	2011	
SAUDI ELECTRICITY COMPANY		<b>POWER PLANT</b> (RABIGH POWER PLANT No. 2 PROJECT)	16 nos. of B.F.P.	56	2012	
SALINE WATER CONVERSION CORPORATION		<b>DESALINATION PLANT</b> (RAS AZ ZAWR RO PROJECT)	34 nos. of RO HP PUMP	66	2012	
SALINE WATER CONVERSION CORPORATION		<b>DESALINATION PLANT</b> (YANBU MED)	1 nos. of $\phi$ 1350 SEAWATER SUPPLY PUMP	11	2012	

# MAJOR CONTRACTS LIST

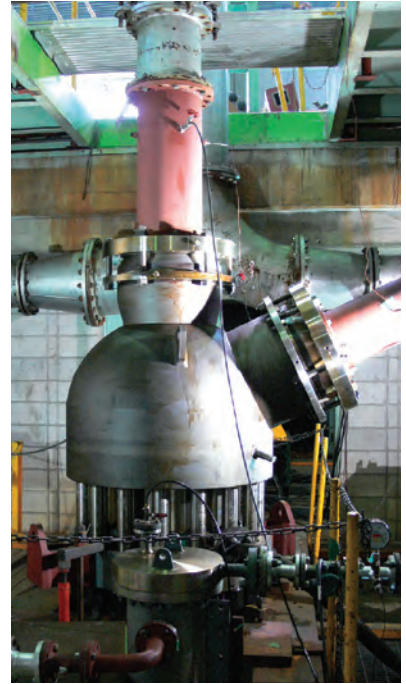
COUNTRY	END USER	PROJECT	DESCRIPTION	SETS	DELIVERY
SYRIA	PUBLIC ESTABLISHMENT FOR GENERATION AND TRANSMISSION OF SYRIA ARAB REPUBLIC	<b>POWER PLANT</b> (AL-ZARA THERMAL POWER STATION)	ONE COMPLETE LOT OF PUMPING SET such as 11 nos. of B.F.P.	53	1998
	PUBLIC ESTABLISHMENT OF ELECTRICITY FOR GENERATION AND TRANSMISSION	<b>POWER PLANT</b> (TISHREEN CCPP)	6 nos. of B.F.P.	15	2009
U.A.E.	ABU DHABI NATIONAL OIL COMPANY	<b>DESALINATION PLANT</b> (REWAIS GUP EXPANSION PROJECT)	2 nos. of $\phi$ 700 VERTICAL DOUBLE SUCTION BRINE RECIRCULATION PUMP	11	1994
	ABU DHABI WATER AND ELECTRICITY AUTHORITY	<b>DESALINATION PLANT</b> (AL-TAWEELAH A2, 50MIGD x 4UNITS)	ONE COMPLETE LOT OF PUMPING SET such as 8 nos. of BRINE RECIRCULATION PUMP	71	2000
	ABU DHABI WATER AND ELECTRICITY AUTHORITY	<b>DESALINATION PLANT</b> (UM AL-NAR STATION 'B' PLANT, 62.5MIGD x 4UNITS)	ONE COMPLETE LOT OF PUMPING SET such as 10 nos. of $\phi$ 1100 BRINE RECIRCULATION PUMP	74	2002
	U.A.E. OFFSET GROUP	<b>POWER PLANT</b> (FUJAIRAH WATER AND POWER PLANT, 620MW)	ONE COMPLETE LOT OF PUMPING SET such as 5 nos. of B.F.P.	42	2002
	ABU DHABI WATER AND ELECTRICITY AUTHORITY	<b>WATER WORKS</b> (SHUWEIHAT WATER TRANSMISSION SCHEME)	5 nos. of $\phi$ 800 DOUBLE SUCTION MAIN PUMP WITH 4700kW MOTOR	18	2004
	TAWEELAH ASIA POWER COMPANY	<b>DESALINATION PLANT</b> (NEW AL-TAWEELAH B EXTENSION PLANT)	8 nos. of $\phi$ 1100 BRINE RECIRCULATION PUMP	31	2006
	ABU DHABI TRANSMISSION & DESPATCH COMPANY (TRANSCO)	<b>WATER WORKS</b> (N-3850 UPGRADING OF MIRFA, MADINAT, ZAYED, MAZAIRA AND LIWA AREA WATER TRANSMISSION SCHEME)	4 nos. of $\phi$ 350, 6-STAGE POTABLE WATER TRANSMISSION PUMP	4	2008
	DUBAI ELECTRICITY & WATER AUTHORITY	<b>DESALINATION PLANT</b> (JEBEL ALI M)	16 nos. of $\phi$ 1200 BRINE RECIRCULATION PUMP	58	2009
	EMIRATES ALMINUM COMPANY LIMITED	<b>ALMINUM PLANT</b> (EMAL ALMINIUM SMELTER COMPLEX)	8 nos. of B.F.P.	14	2009
	EMIRATES ALMINUM COMPANY LIMITED	<b>ALMINUM PLANT</b> (EMAL ALMINIUM SMELTER COMPLEX)	6 nos. of $\phi$ 1650 CIRCULATING WATER PUMP	14	2009
	DUBAI MUNICIPALITY	<b>SEWERAGE SYSTEM</b> (DS-161 PUMPING STATION X1 AND ITS RISINGS MAINS)	8 nos. of $\phi$ 700 SEWAGE PUMP	8	2009
	FUJAIRAH 2 PROJECT COMPANY	<b>POWER PLANT</b> (FUJAIRAH 2 IWPP)	8 nos. of B.F.P.	8	2009
	FUJAIRAH ASIA POWER	<b>DESALINATION PLANT</b> (FUJAIRAH 2 RO SEAWATER DESALINATION PLANT)	10 nos. of 1ST PASS HP PUMP	28	2009
	ABU DHABI WATER AND ELECTRICITY AUTHORITY	<b>DESALINATION PLANT</b> (SHUWEIHAT S2 IWPP PROJECT)	12 nos. of $\phi$ 1200 BRINE RECIRCULATION PUMP, 12 nos. of $\phi$ 600 DISTILLATE PUMP, and 6 nos. of BRINE BLOW DOWN PUMP	30	2009-10
	ABU DHABI TRANSMISSION & DESPATCH COMPANY (TRANSCO)	<b>WATER WORKS</b> (AL AIN DISTRIBUTION NETWORK - PUMP STATION AT AARC)	8 nos. of $\phi$ 800 x 500 MAIN PUMP	8	2011
<b>OCEANIA</b>					
AUSTRALIA	GCD ALLIANCE	<b>DESALINATION PLANT</b> (GOLD COAST DESALINATION PROJECT, RO, 125MIGD)	ONE COMPLETE LOT OF PUMPING SET such as 4 nos. of 1ST PASS RO HP PUMP	17	2007
		<b>POWER PLANT</b> (BLUEWATERS POWER STATION UNIT1,2)	ONE COMPLETE LOT OF PUMPING SET such as 6 nos. of B.F.P.	28	2007-08
	ALINTA ENERGY	<b>POWER PLANT</b> (TAMAR VALLEY POWER STATION, 200MW, LNG FIRED CCPP)	ONE COMPLETE LOT OF PUMPING SET such as 2 nos. of HP B.F.P.	11	2008
	SYDNEY DESALINATION	<b>DESALINATION PLANT</b>	5 nos. of $\phi$ 1800 SEAWATER INTAKE PUMP	5	2008
	THIESS DEGRAMONT JOINT VENTURE	<b>DESALINATION PLANT</b> (VICTORIAN DESALINATION PROJECT)	27 nos. of RO 1ST PASS HP PUMP	36	2010-11



φ 1100 Brine recirculation pump  
(AL SHOAIIBA PHASE 2, SAUDI ARABIA)



φ 300 Main pump  
(SHUQAIQ IWPP PHASE II, SAUDI ARABIA)



Boiler circulation pump  
(SHUQAIQ IWPP PHASE II, SAUDI ARABIA)



φ 2200 Seawater supply pump  
(SHUAIBAH IWPP PROJECT,  
SAUDI ARABIA)



HP Barrel type feed pump acc. to API 610  
(SAUDI KAYAN PETROCHEMICAL  
COMPANY, SAUDI ARABIA)



HP Ring section boiler feed pump  
(RABIGH ARABIAN WATER AND  
ELECTRICITY, SAUDI ARABIA)



13 nos. of φ 1400  
cooling water pump  
(PUBLIC AUTHORITY  
FOR INDUSTRY, KUWAIT)



φ 1500 Seawater supply pump  
(SABIA DESALINATION  
PLANT III, KUWAIT)



φ 900 x 700 UF feed pump  
(SHUWAIKH RO PJT, KUWAIT)





φ 1500 Circulating water pump  
(MESAIEED A IWPP PROJECT, QATAR)

φ 400 Main pumps  
(OLD SALWA PUMPING  
STATION, QATAR)



M.S.F. seawater desalination plant with  
various seawater pumps  
(AL TAWEELAH A2 DESALINATION PLANT,  
U.A.E.)



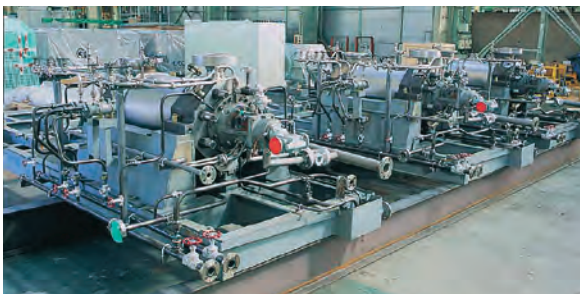
Ring section boiler feed pump for  
combined cycle power plant  
(FUJAIRAH WATER AND POWER  
PLANT, U.A.E.)



φ 1200 Brine recirculation pump  
(JEBEL ALI M, U.A.E.)

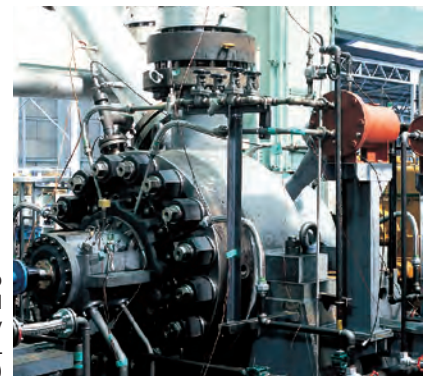


φ 800 x φ 500 double suction drinking water transmitting pumps with high total head 250m  
(SHUWEIHAT WATER TRANSMISSION SCHEME, U.A.E.)



Ring section boiler feed pumps for combined cycle power plants  
(IRAN POWER PLANT MANAGEMENT COMPANY, IRAN)

Barrel type boiler feed pump  
Driven by 12,600kW turbine and  
having a 100% load capacity  
(ELBISTAN 'B' THERMAL  
POWER PLANT, TURKEY)





φ 1000 Sea water pumps for LNG vaporizing plant  
(KOREA GAS CORPORATION, KOREA)



φ 250 Boiler circulation pump  
(KEPCO, PUSAN COMBINED CYCLE POWER PLANT, KOREA)



φ 1500 Main circulation water pump with adjustable vane  
(OMON THERMAL POWER PLANT, VIETNAM)



φ 1300 Vertical end suction sewage pumps  
(HARBOUR AREA TREATMENT SCHEME, HONG KONG)



Boiler feed water pump (XIAMEN CCGT POWER PLANT  
350MW CCGP x 2, CHINA)



φ 1400 FGD Absorber pump  
(JIMAH POWER PLANT, MALAYSIA)



φ 1350 Double suction booster pump  
(METROPOLITAN WATER WORKS AUTHORITY, THAILAND)



HP/IP Boiler feed pump (RATCHABURI POWER COMPANY LIMITED, THAILAND)

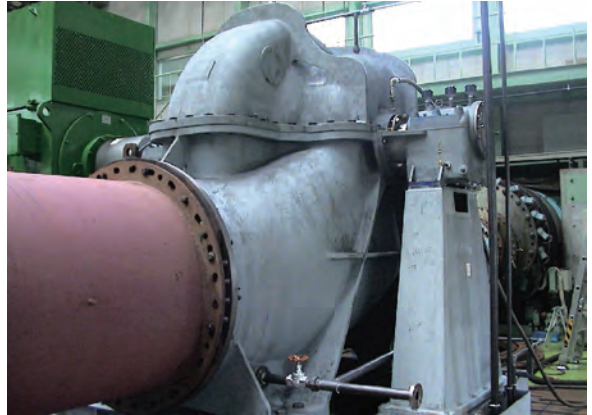


φ 300 Boiler feedwater pump  
(CIREBON COAL FIRED POWER PLANT, INDONESIA)



φ 300 Boiler circulation pump  
(NTPC KORBA POWER STATION, INDIA)

AMERICA, SOUTH & NORTH

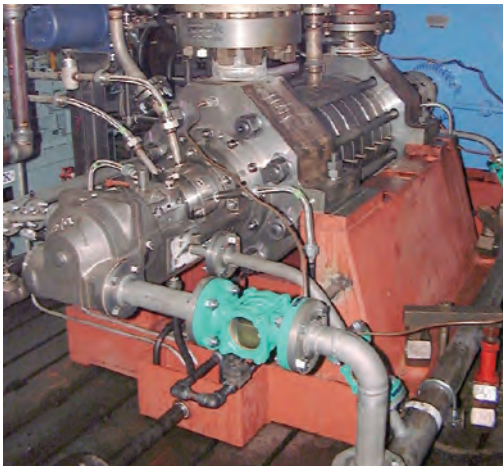


φ 1350 Double suction main circulating water pump  
(ENDESA CHILE CENTRAL SAN POWER PLANT,  
ISIDRO- II , CHILE)

φ 2100 Circulating water pump  
(PACIFICO COAL FIRED  
POWER PLANT, MEXICO)

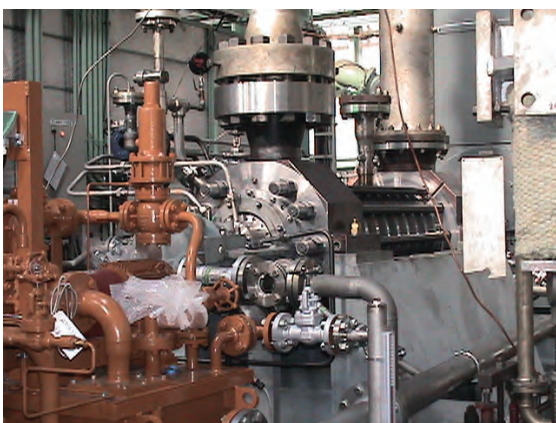


φ 1350 Circulating water pump  
(SAN MARTIN CCPP, ARGENTINE)



HP/IP boiler feed pump  
(TUXPAN COMBINE CYCLE  
POWER PLANT, MEXICO)

EUROPE

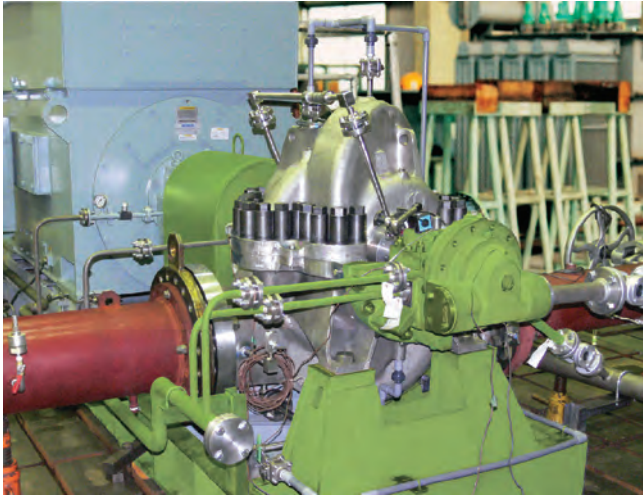


Boiler feed pump  
(CyCoFos Power Plant, PL 1, CCPP, FRANCE)



HP/IP feed water pump  
(E. ON UK ISLE OF GRAIN POWER STATION, UK)

AFRICA



High pressure RO pump  
(HAMMA DESALINATION  
PLANT, 44MIGD,  
ALGERIA)



φ 1100 Vertical seawater  
feed pump  
(ARZEW DESALINATION  
AND POWER COMPLEX  
PROJECT, 90,000m<sup>3</sup>/d,  
ALGERIA)

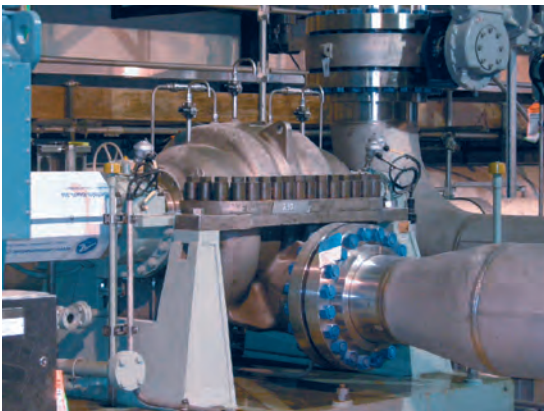


φ 900 Hot well pump  
(OLAKARIA II GEOTHERMAL POWER PLANT, KENYA)



φ 900 Seawater pump (SOUSSA DESALINATION PLANT, LIBYA)

OCEANIA



1st Pass RO HP pump  
(GOLD COAST DESALINATION PROJECT, AUSTRALIA)



φ 1000 Circulating water pump (BLUEWATERS POWER STATION UNIT 1 PROJECT, AUSTRALIA)