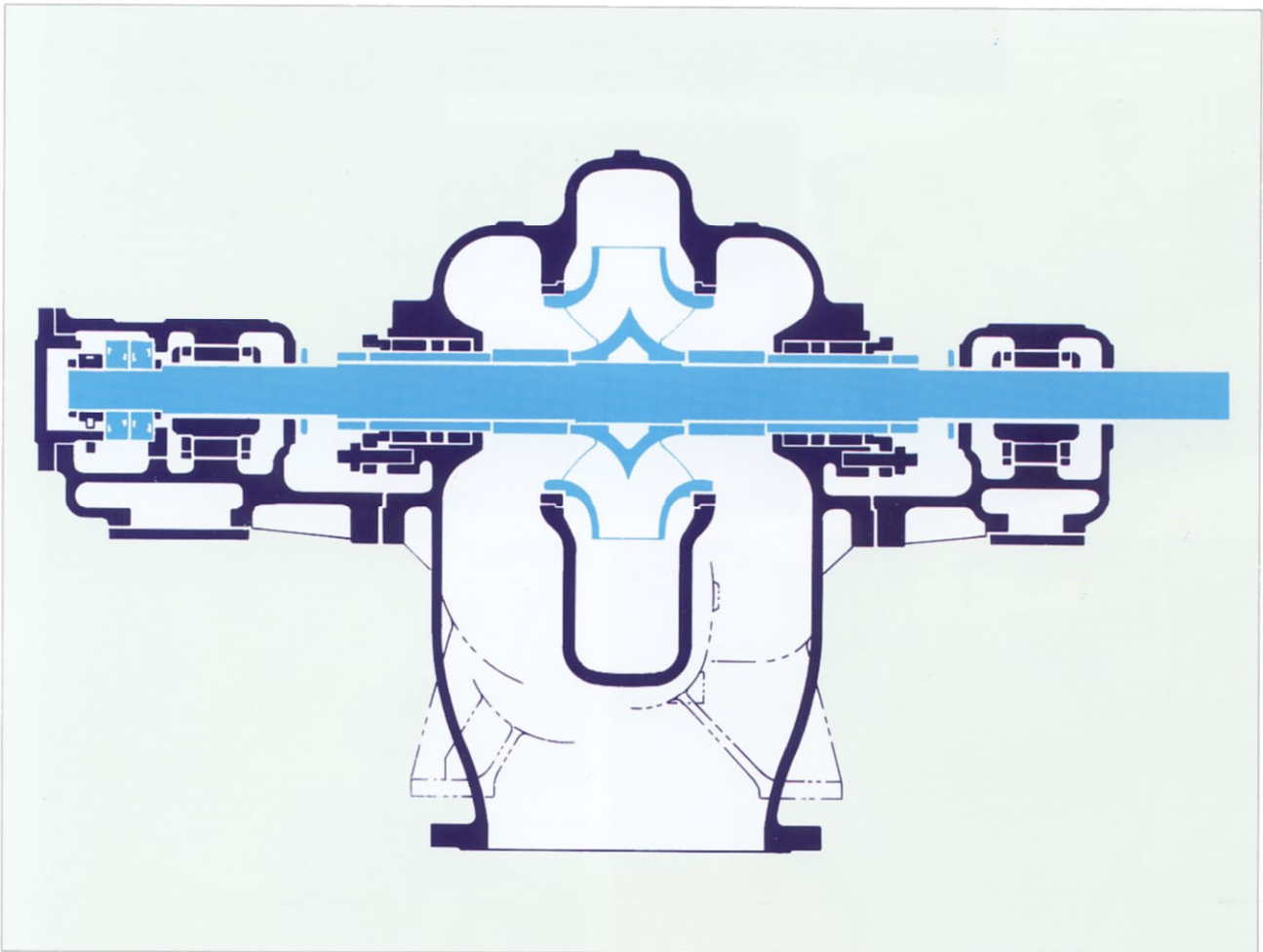


CDM

Double Suction Pumps

Bore size : 24 to 56 in (600 to 1400mm)



TORISHIMA PUMP

Design

Standard nozzle suction are also Axially split volute discharge pipe

Applications

Power Plant/Cooling water, etc.

Sea Water

Desalination Plant/Cooling water, Brine blow down, etc.

Water Works/Water intake, Boosting, Distribution.

Pipe Line/Boosting.
etc.

Handled Liquids

Fresh water
Industrial water
River water
Sea water
Crude oil
etc.

Application Range

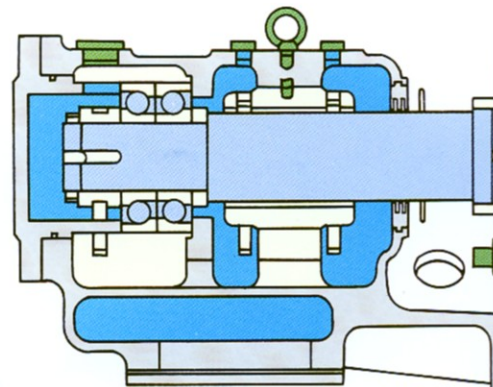
Total head/up to 210m
Capacity/up to 550m³/min (33,000m³/h)
Liquid Temperature/up to 80°C
(Over 80°C also available)
Sizes/600mm to 1400mm

For larger application range, another line-up of double suction pumps is available.

Impeller (Three-dimensional closed impeller)

Standard material: Bronze

Phosphor bronze, Stainless steel, Aluminium bronze, Cast iron, Spheroidal graphite cast iron are also available.



Volute casing

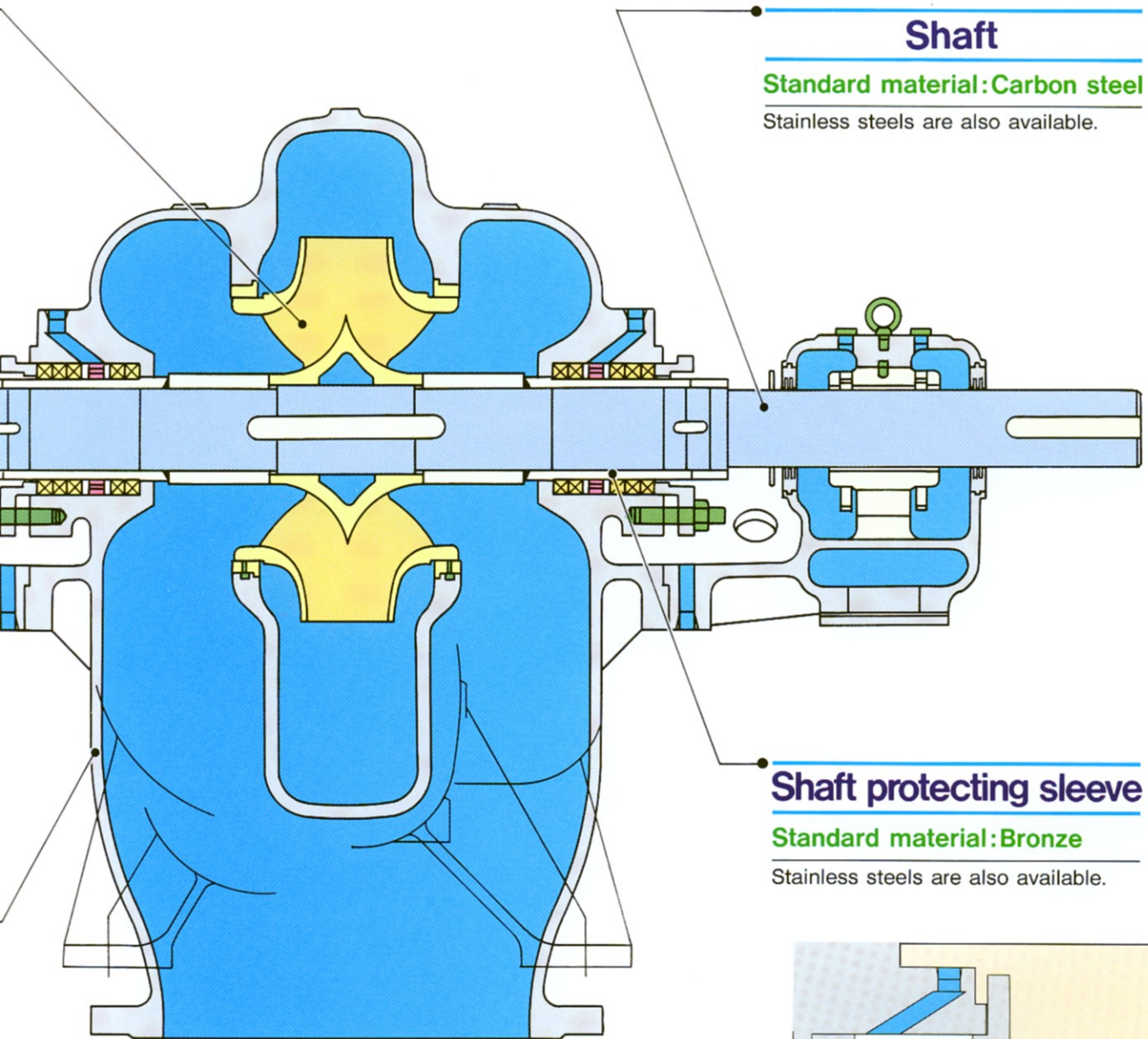
Flanges: Suc.) JIS 10kgf/cm² R.F.
Dis.) JIS 10kgf/cm² R.F.
or JIS 16kgf/cm² R.F.

ANSI, BS, ISO are also available.

Standard material: Cast iron

Ni-resist, Spheroidal graphite cast iron, Stainless steel, Aluminium bronze are also available.

the orientation is side-side, but other executions such as bottom
to available if required.
ute casing can be opened without dismantling the suction and
s.



Shaft

Standard material: Carbon steel

Stainless steels are also available.

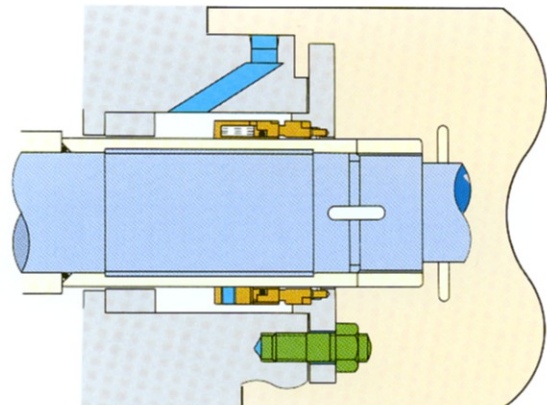
Shaft protecting sleeve

Standard material: Bronze

Stainless steels are also available.

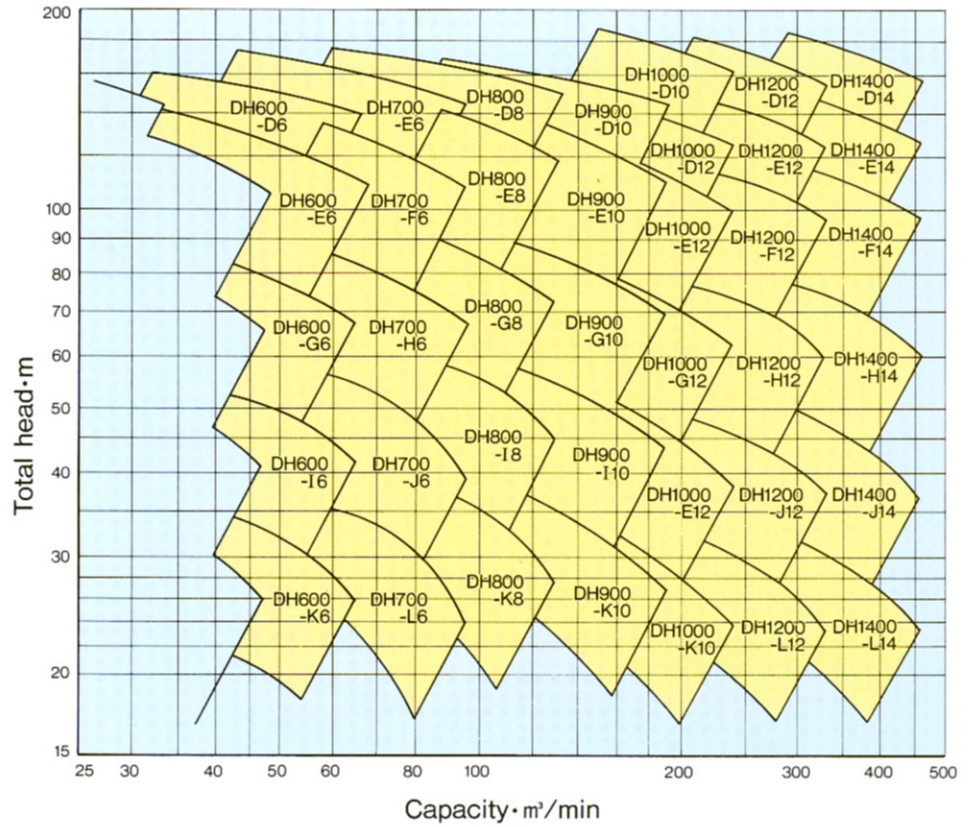
Mechanical Seal

The mechanical seal as shaft sealing saves resources and energy by preventing the pumped liquid from leaking and smooth pump rotating

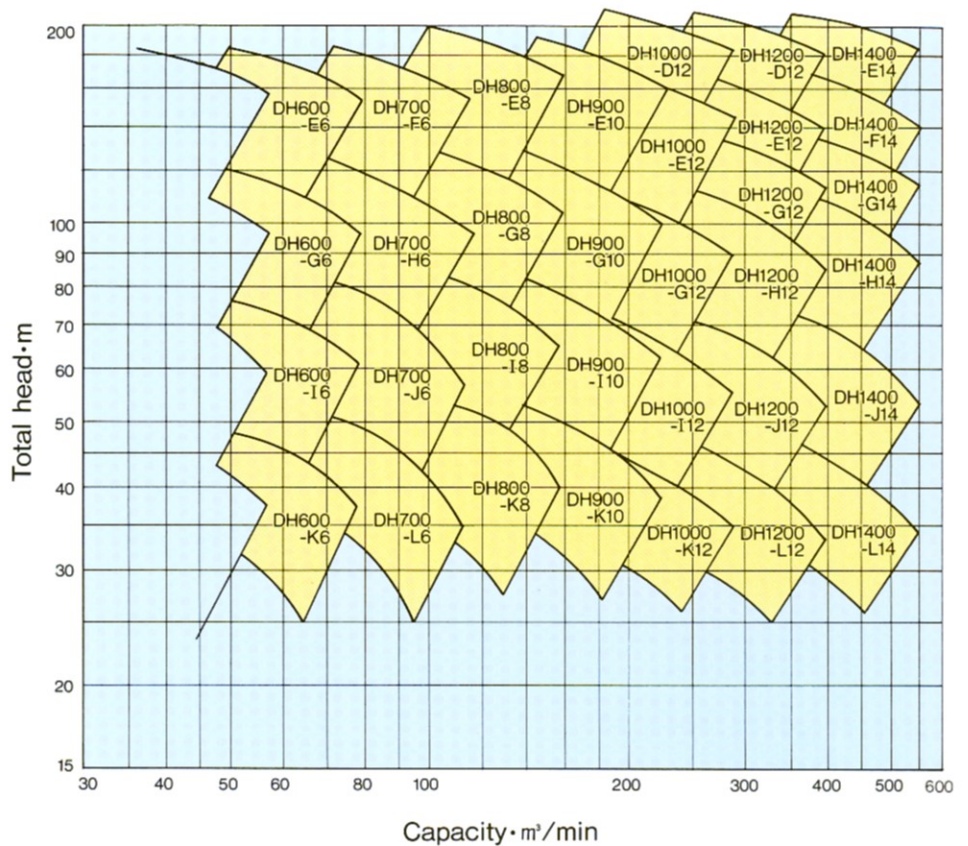


Selection Charts

50Hz



60Hz

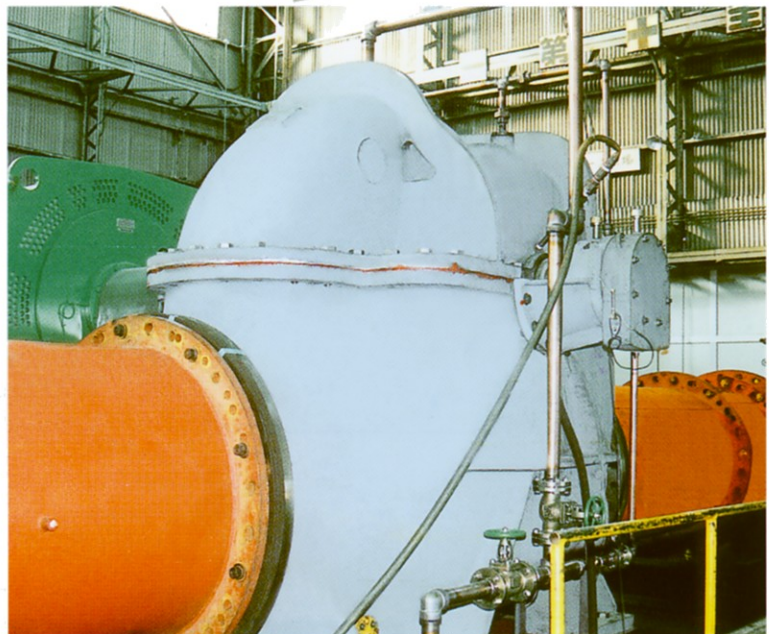
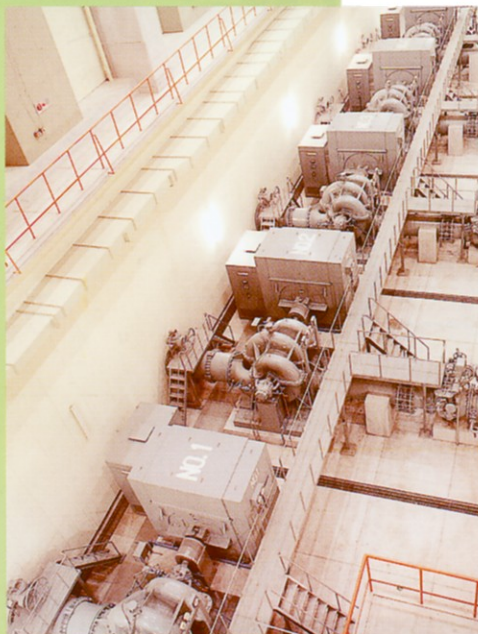
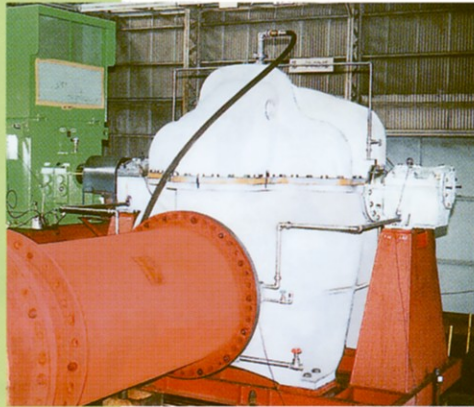


Applications



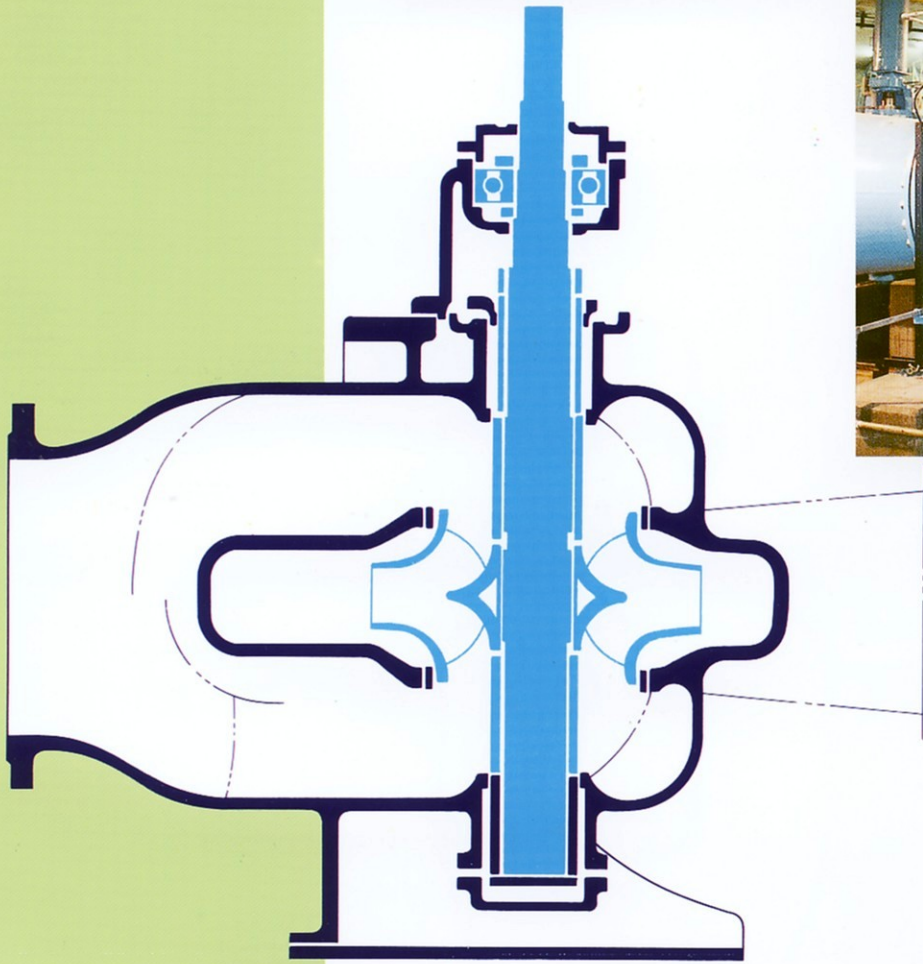
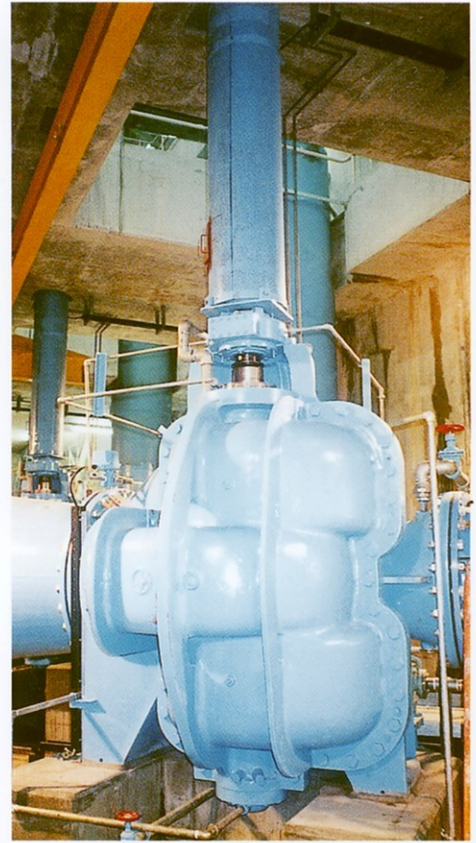
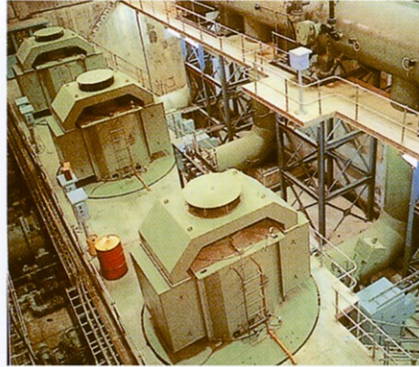
①	
②	③
④	⑤

- ① Booster pumps in water works plant, Thailand. Size:54in(1350mm),Driver:2100kW.
- ② Circulating pump for a combined cycle power plant, Thailand. Size:48in(1200mm),Driver:1250kW.
- ③ Cooling water pumps in a district heating and cooling plant, Japan. Size:32in(800mm),Driver:850kW.
- ④ Water supplying pumps in a water works plant, Japan. Size:36in(900mm),Driver:1500kW.
- ⑤ Cooling water recycle pump in a sea water desalination plant, Abu Dhabi. Size:40in(1000mm),Driver:750kW.



Vertical Version

CDMV



① | ②

- ① Condenser cooling water pumps in a 240MW. power plant, Malaysia. Size:48in(1200mm),Driver:850kW.
- ② Water distributing pumps in a water works plant, Hong Kong. Size:28in(700mm),Driver:650kW.

TORISHIMA PUMP MFG. CO.,LTD.

Head Office & Works: 1-1-8, Miyata-cho, Takatsuki City, Osaka, Japan.
Phone:072-695-0551 Telefax:072-693-1288

TORISHIMA SINGAPORE
SINGAPORE BRANCH
30 Ubi Crescent #01-02 Ubi Techpark Singapore 408566
Phone:(65)6779-0123 Telefax:(65)6779-6900

TORISHIMA HONG KONG
TORISHIMA (HONG KONG) LIMITED
Unit 603, 6/F., Tower III, Enterprise Square, 9 Sheung Yuet Road, Kowloon Bay, Kowloon, Hong Kong
Phone:(852)2795-1838 Fax:(852)2754-3293

TORISHIMA MALAYSIA
TORISHIMA MALAYSIA SDN.BHD
No.16 Jalan TS6/9, Taman Industry Subang, Subang Jaya, 47510 Petaling Jaya, Malaysia
Phone:(603)5638-0028 Fax:(603)5638-4023

TORISHIMA INDONESIA
P.T. TORISHIMA GUNA INDONESIA
JL Rawa Sumur Timur No.1, Pulogadung Industrial Estate, P.O Box.:1160 JAT., Jakarta 13930, Indonesia
Phone:(62)21-460-3963,(62)21-460-3964,(62)21-480-0205 Fax:(62)21-460-3937

P.T. TORISHIMA GUNA ENGINEERING
JL Rawa Sumur Timur No.1, Pulogadung Industrial Estate, P.O Box.:1160 JAT., Jakarta 13930, Indonesia
Phone:(62)21-460-3963,(62)21-460-3964,(62)21-480-0205 Fax:(62)21-460-3937

P.T. GETEKA FOUNINDO
JL Rawa Sumur Timur No.1, Pulogadung Industrial Estate, P.O Box.:1160 JAT., Jakarta 13930, Indonesia
Phone:(62)21-460-3936,(62)21-460-3937 Fax:(62)21-460-3937

TORISHIMA U.A.E
MIDDLE EAST OFFICE
5th Floor, office No.503, Al Salmeeen Golden Tower, P.O Box:72197, Electra Street, Abu Dhabi, U.A.E
Phone:(971)2-6743880 Fax:(971)2-6743881

TORISHIMA U.K.
EUROPE OFFICE
20/23 Woodside place Glasgow G3 7QF Scotland United Kingdom
Phone:(44)141-304 4546 Fax:(44)141-332 4927

TORISHIMA U.S.A.
U.S. OFFICE
82B Daniels Road, Charlton, MA01507, United States of America
Phone:(1)866-374-1130 Fax:(1)508-248-9321